



Philips Consumer Lifestyle

HD9240/90  
HD9240/91  
HD9240/92  
HD9240/93  
HD9240/94  
HD9240/95  
HD9240/96  
RI9240/90  
RI9240/91

Version: A

# Service Manual

## PRODUCT INFORMATION

- This product meets requirements regarding interference suppression on radio and TV.
- After the product has been repaired, it should function properly and has to meet the safety requirements as officially laid down at this moment.

## OPTIONAL (Accessories)

Baking dish 4222 459 52761

Grill (double layer acc.) with skewers HD9905/00

Grill pan HD9911/90

Specifications Airfryer XL with Rapid Air technology

Low fat fryer Multicooker 1.2kg, White

## Design and finishing

- Color(s): Star White
- Materials: Plastic

## General specifications

- Patented Rapid Air Technology
- Digital Touch-Screen Interface: 60-minute timer,  
Integrated Power-on light  
On/Off switch  
Preset cooking function  
Time and temperature control
- Ready signal
- Cord storage
- Non-slip feet
- Automatic shut-off

## Weight and dimensions

- Product dimensions (W x H x D) : 315 x 302 x 423 mm
- Weight appliance : 7.0 kg

## TECHNICAL INFORMATION

- Frequency : 50/60 Hz
- Power Global : 2100 W
- Voltage Global : 220-230 V
- Cord length : 0.8 meter
- Materials : Outer skin : Plastic (PP)  
: Pan : Aluminized steel  
: Basket : Aluminized steel  
: Basket mesh : Stainless steel  
: Coating : PTFE coating
- Capacity : 2.2 liter (1,2 kg)  
(till max indicator)
- Coloursetting : black
- Temperature : 80 till 200 °C
- Fuse cut-o temp. Motor : 145 °C  
TCO : 190 °C

# TECHNICAL INFORMATIONS

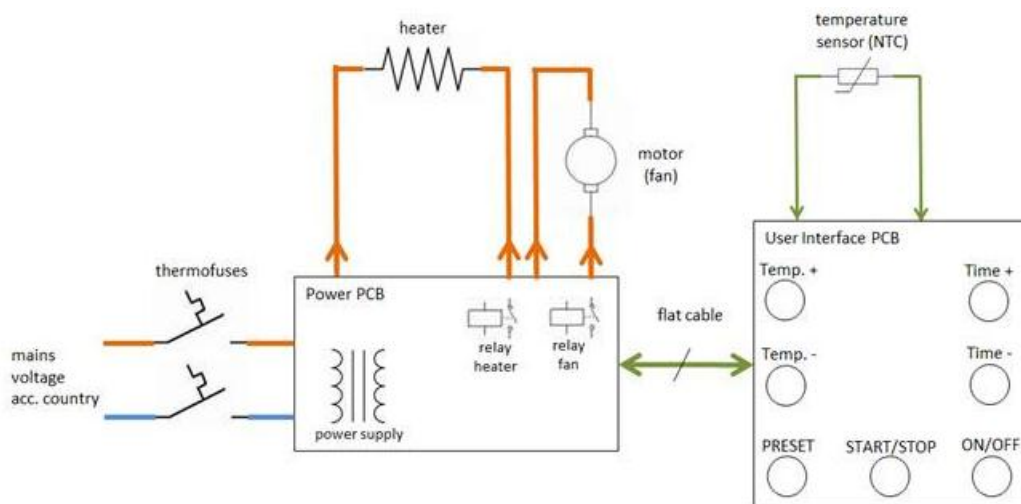
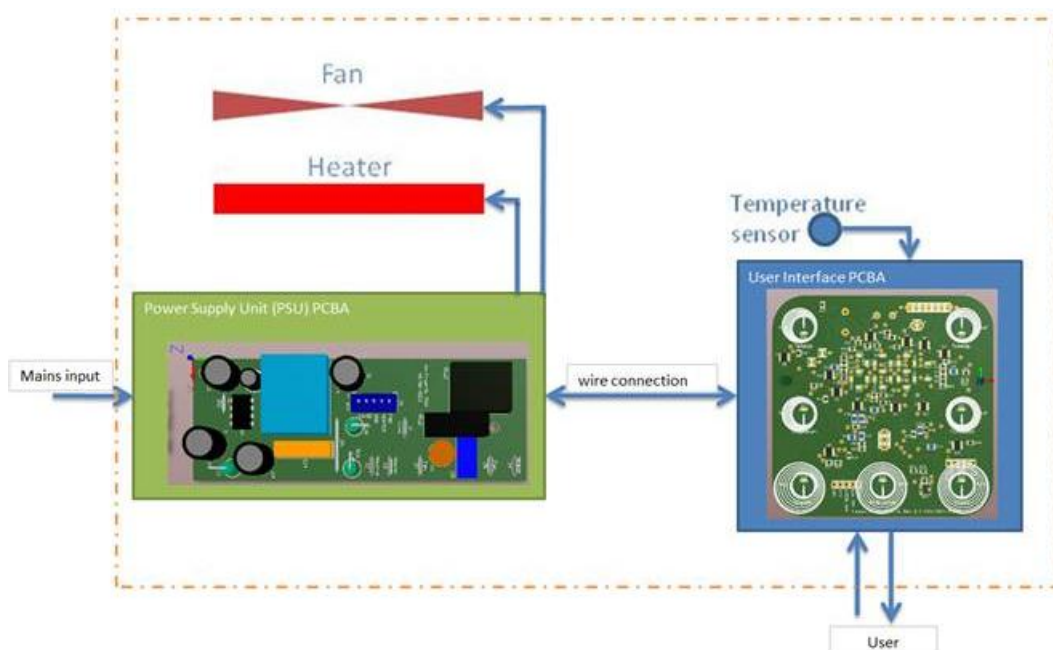
HD9240/90  
HD9240/91  
HD9240/92  
HD9240/93  
HD9240/94  
HD9240/95  
HD9240/96  
RI9240/90  
RI9240/91

	Voltage	Frequency
WEU,EEU,SEU,Nordic,TR	220 - 240V	50 Hz
UK,DB,SGP,HK,MY,IN,TH,AU,NZ,ZA	220 - 240V	50 Hz
AR	220V	50 Hz
CN	220V	50 Hz
TW	110V	60 Hz
SA,KR	220V	60 Hz

## Electrical circuit

When the appliance does not work, check the electrical circuit.

Open de lid panel always on the underside. Always replaces this panel in case of damaged, scratches body or broken click connection.



# PARTSLISTS

Pos	Service code	Description
1	4203 036 03741	Top cover main black
2	4203 036 03491	Housing top
3	4203 036 03181	LCD Unit complete
	4203 036 03951	LCD unit US
4	4203 036 03191	UI front printed
5	4203 036 03201	UI diffuser
6	4203 036 03211	UI PCB assy
	4203 036 03961	UI PCB assy US
7	4203 036 03221	UI light seperator
8	4203 036 03231	UI back
9	4203 036 03501	Basket assy
10	4203 036 03251	Pan assy
11	4203 036 03511	Drawer assy white
12	4203 036 03271	Chassis bottom / side assy
13	4203 036 03761	Housing/Bottom (incl. Studs)
14	4203 036 03521	Cable storage white
15	4203 036 03301	Heat shield
16	4203 036 03311	Cooking fan assy
17	4203 036 03321	Fan cooling incl. Ring, adapter
18	4203 036 03331	Cooling air cover assy
19	4203 036 03341	Chassis top assy
20	4203 036 03351	Pan sealing
21	4203 036 03361	Heater assy + reflector 230V/2000 W
	4203 036 03531	Heater assy + reflector 220V/2000 W
	4203 036 03541	Heater assy + reflector 127V/1900 W
	4203 036 03551	Heater assy + reflector 120V/1700 W
	4203 036 03561	Heater assy + reflector 110V/1550 W
	4203 036 03571	Heater assy + reflector 100V/1400 W
22	4203 036 07241	Power supply PCB assy coated
23	4203 036 03391	Power PCB frame
24	4203 036 03401	Motor 230V/50 Hz
	4203 036 03411	Motor 220V/60 Hz
	4203 036 03421	Motor 110V/60Hz
	4203 036 03581	Motor 127V/60Hz (BR LV)
	4203 036 03591	Motor 220V/50Hz (CN)
	4203 036 03601	Motor 120V/60Hz
	4203 036 03611	Motor 100V/650-60Hz
25	4203 036 03431	Exhaust black
26	4203 036 03781	Powercord EU
	4203 036 03791	Powercord UK/DB
	4203 036 03801	Powercord CN
	4203 036 03811	Powercord AU
	4203 036 03821	Powercord TW
	4203 036 03831	Powercord ID
	4203 036 03841	Powercord AR
	4203 036 03851	Powercord CH
	4203 036 03861	Powercord SA
	4203 036 03871	Powercord SG (export)
	4203 036 03881	Powercord KR
	4203 036 03891	Powercord BR (HV)
	4203 036 03901	Powercord SG/MY/HK
	4203 036 03911	Powercord TH
	4203 036 03921	Powercord US
	4203 036 03931	Powercord JP
	4203 036 03941	Powercord BR (LV)
27	4203 036 08891	Stud (1 pcs.)
28	4203 036 08971	Top cover back (black)

HD9240/90

HD9240/91

HD9240/92

HD9240/93

HD9240/94

HD9240/95

HD9240/96

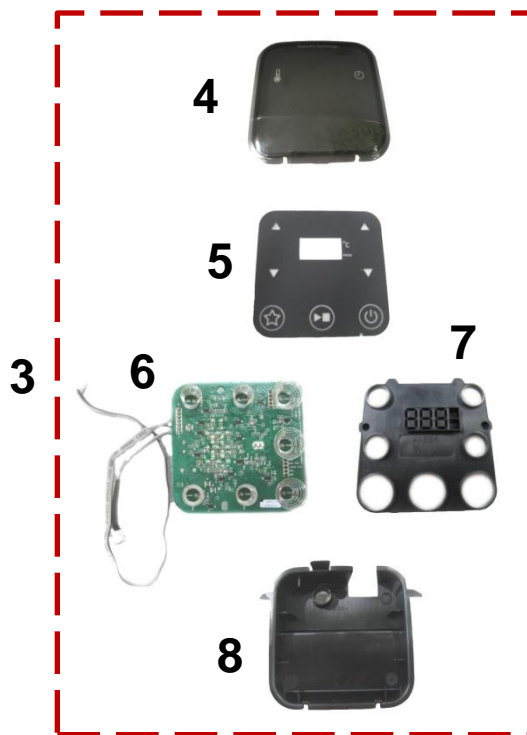
RI9240/90

RI9240/91

# EXPLODED VIEW

HD9240/90  
HD9240/91  
HD9240/92  
HD9240/93  
HD9240/94  
HD9240/95  
HD9240/96  
RI9240/90  
RI9240/91

## LCD unit



9  
(CRP)

10  
(CRP)

14  
(CRP)



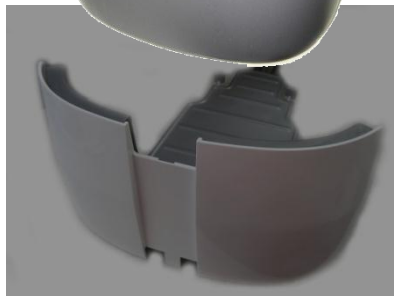
29  
HD9905/00



30  
HD9911/90



11



# EXPLODED VIEW

HD9240/90  
HD9240/91  
HD9240/92  
HD9240/93  
HD9240/94  
HD9240/95  
HD9240/96  
RI9240/90  
RI9240/91

15



20



16



21



17



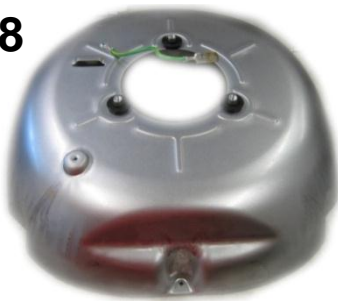
22



23



18



24



25



19



26



black

28





## Repair instruction to exchange the power PCBA of the XL Air Fryer HD9240/30 and HD9240/90

Page 1 from 11

### Introduction:

This work instruction describes how to exchange the Power Control PCBA of the Avance Air Fryer HD9240 series. The component is exchanged by an improved version, which has a coating applied in order to prevent Field Failures, related to cross talk of electronic components, triggered by humidity.

### Important Notices:

Proper ESD pre cautions must be installed in the repair place as well as during any handling of the PCBAs in the warehouse and in the Repair shop!

The PCBAs must be handled with care and stored in a dry environment;

Each set, which is reworked according this procedure, must undergo a Safety and Quality – inspection, following a related checklist, file reference: [QualityControlPlan\\_for-rework.xlsx](#)  
A sticker has to be applied on the bottom of the device next to the type plate as evidence for the rework and passing the Quality Inspection. The sticker must contain the repair date in the format YY/WW.

The Quality control list has to be filled and the sheet has to be kept as record;

### Work Instruction for repair

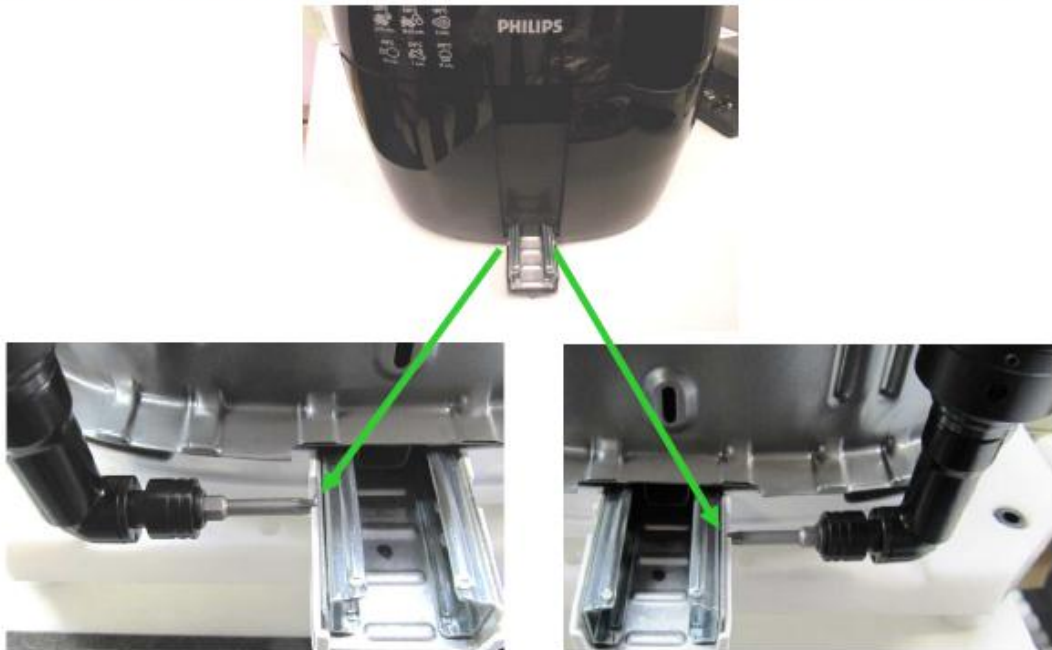
1. Take out appliance from the A-box (in case device is delivered in an A-Box)
2. Take out Protection cardboard and Basket Assy with Pan|



# Repair instruction to exchange the power PCBA of the XL Air Fryer HD9240/30 and HD9240/90

Page 2 from 11

3. Unscrew two Screws TT4x4 /T20 to loosen the drawer rail assy from the main Body;



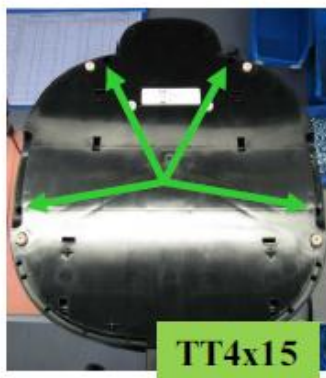
4. Take out Drawer assy



# Repair instruction to exchange the power PCBA of the XL Air Fryer HD9240/30 and HD9240/90

Page 3 from 11

5. Unscrew 4 screws which are screwed in housing bottom to release the housing tom from the lower part.

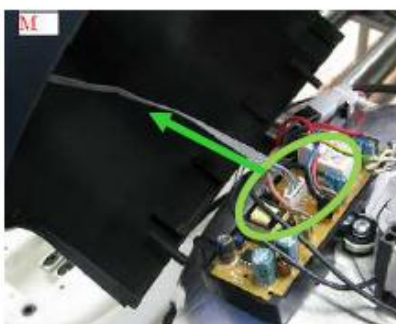


6. Take out housing top.



Lift housing very carefully  
to don't damage wires  
which are connected to UI  
PCB which is assembled in  
housing top

7. Disconnect NTC wire and power PCB plug





# Repair instruction to exchange the power PCBA of the XL Air Fryer HD9240/30 and HD9240/90

Page 4 from 11

8. Disconnect power wires (to heater and thermo fuses) connected to power PCB

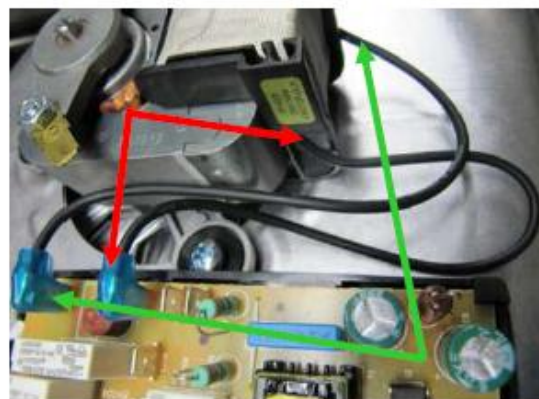


9. Take out power PCB and replaced by the new one. PCB should be catch by all mounting points.

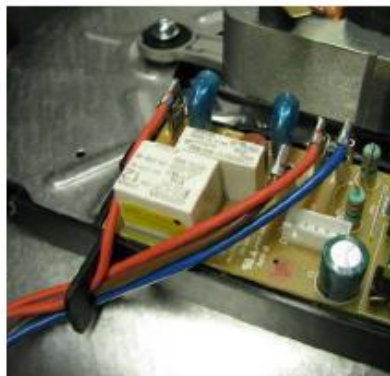
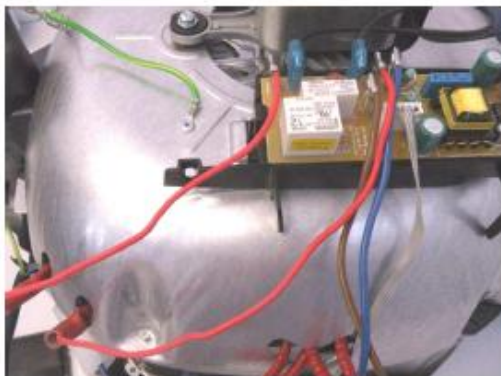


**Control Point: Proper ESD precautions must be installed for this work place!**

10. Connect motor wires to power PCB in way showed below.

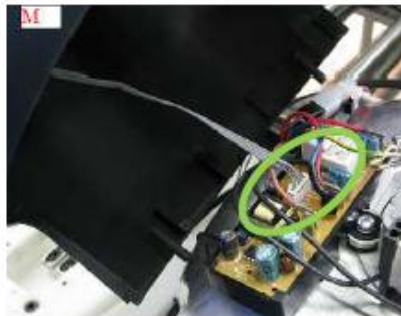


11. Connect power wires (to heater and thermo fuses)



**Control Point: Proper ESD precautions must be installed for this work place!  
All plug connections must be well connected!**

12. Connect NTC wire and power PCB plug



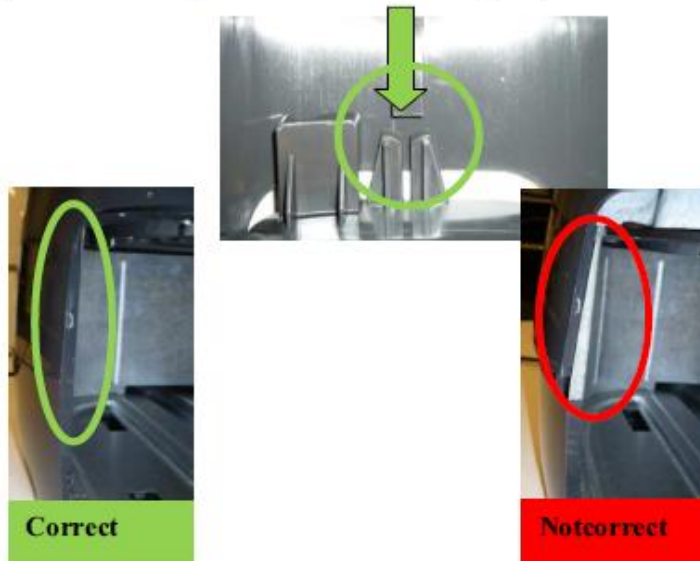
**Control Point: plug connections must be well connected!**

13. Put housing top



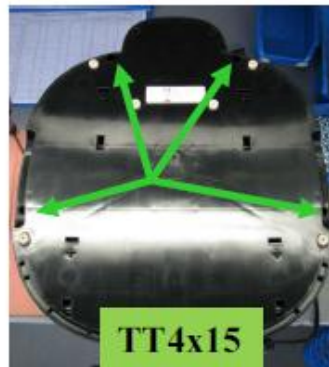
**Control Point: gap between top housing and bottom housing - properly closed, front area correct fit between bottom part and housing part.**

During that operation check position of rib in Housing Top if ribs are fitting to Cable Storage



**Control Point: correct fit between bottom part and housing part.**

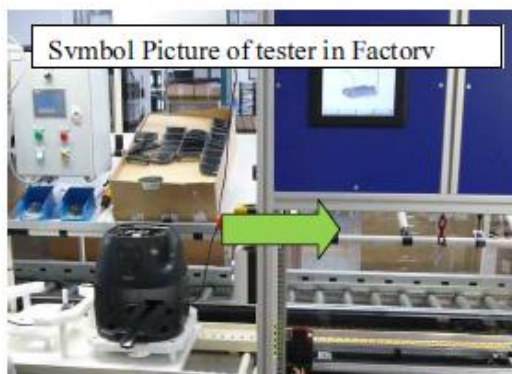
14. Screw 4 screws in housing bottom



**Control Point: screw loosening torque. 0,8Nm +/- 0,1**



15. Put appliance to tester



**Control Point: Hi Voltage Test between L + N against PE - contact; test voltage = 1750VAC, holding time = 10 seconds, max. creeping current: 10mA**

**Control Point: PE - connection – test voltage drop between PE - contact on plug to metal frame of device (connect in bottom area at rail of drawer) testing current 10A (+/- 1), calculated resistance < 0,1 Ohm**

16. After positive High Voltage and PE-connection test performed self-test  
Put plug into socket. Touch in the same time buttons 3, 5, 7 for few seconds.



All diodes on screen will start shining. Start touching buttons in order: 1, 2, 3, 4, 5, 6, 7, 1





# Repair instruction to exchange the power PCBA of the XL Air Fryer HD9240/30 and HD9240/90

Page 8 from 11



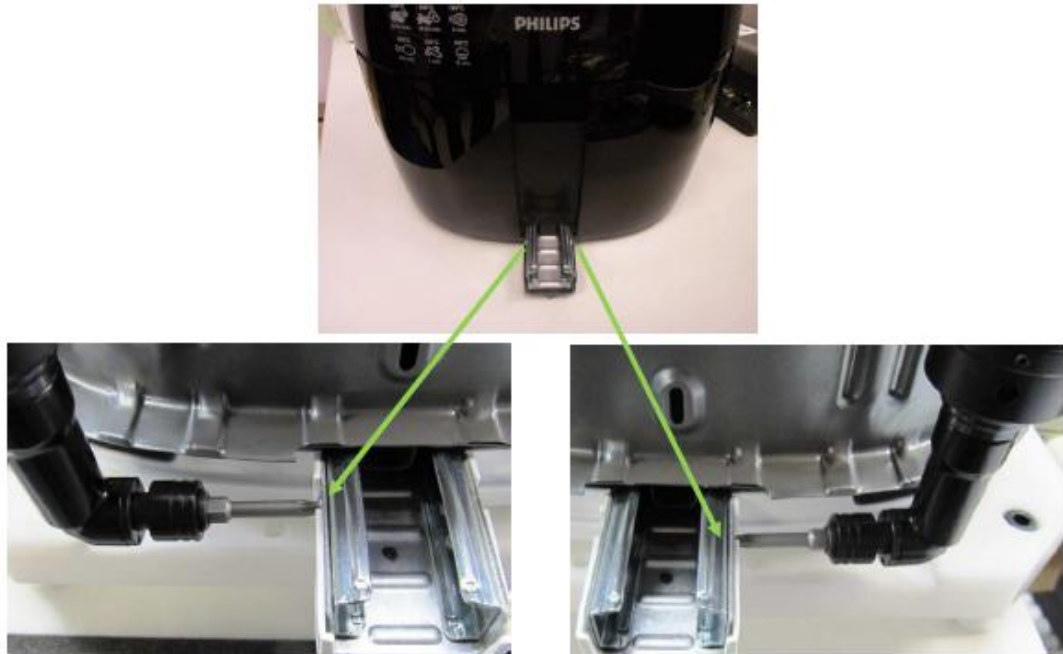
**NOK result** – on screen will appears sign „Er” – appliance need to be put aside for analysis

**OK result** – on screen will appears sign “rd” – appliance is ok we can continue production process

17. Put Drawer assy

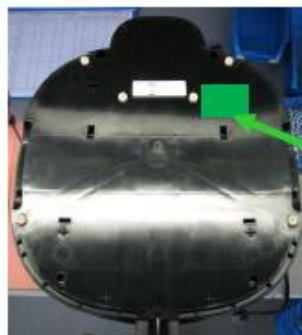


18. Screw two Screws TT4x4 /T20/



**QUALITY – CHECK POINT: screw loosening torque. 0,8Nm +/- 0,1**

19. Screw two Screws TT4x4 /T20/



Apply Test Sticker with new batch code (repair date)  
as evidence for repair and test.

**QUALITY – CHECK POINT: Each set must have a Quality Inspection Sticker!  
Special attention to the Power Cable – check if it is in good order! In case cable is damaged, cable must  
be replaced!**

20. Put Protection cardboard and Basket Assy with Pan



21. Pack appliance into foil bag and cover by foam in the way illustrated bellow



### PACKAGING For Versions with Creased Plates

22. Put Carton Insert 2 X in the way illustrated bellow



23. Attach Upper Creased Plate



24. Put Cover Buffer and close the F-box



**PACKAGING with Pulp Tray**

25. Put leaflets in the way illustrated  
bellow



26. Put Pulp x2 and close the F-box



27. Put appliance in to Pulp





# DISSASSEMBLY ADVICE

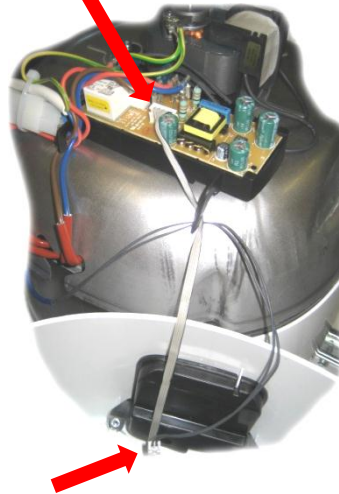
HD9240/90  
HD9240/91  
HD9240/92  
HD9240/93  
HD9240/94  
HD9240/95  
HD9240/96  
RI9240/90  
RI9240/91

## A. Top cover removal

1. open the 4 screws on the bottom
2. remove the housing



3. remove both wires



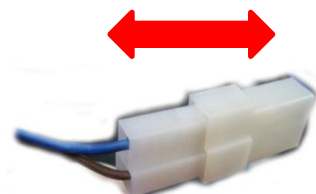
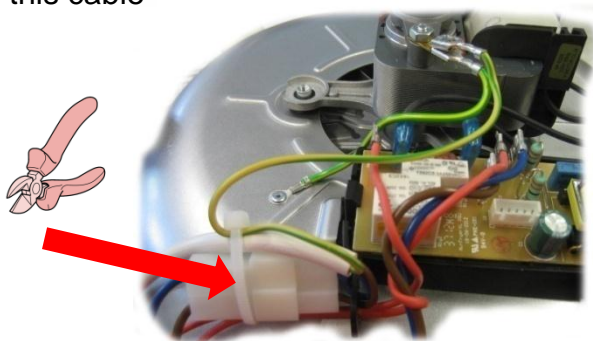
## B. LCD window removal

1. remove both screws
2. Dissassemble all 5 LCD parts



## C. Powercord removal

1. Cut this cable



# DISSASSEMBLY ADVICE

HD9240/90

HD9240/91

HD9240/92

HD9240/93

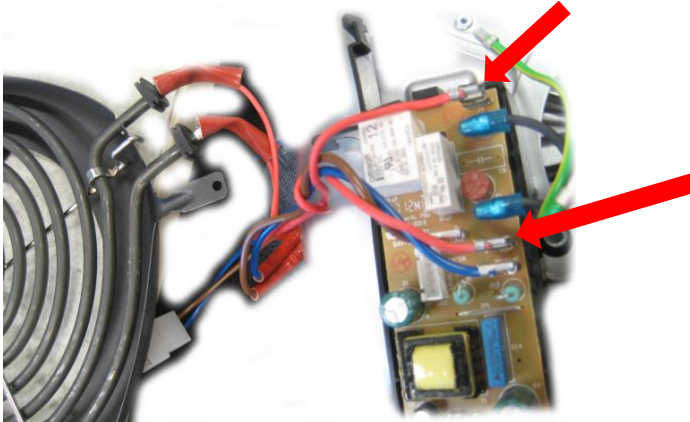
HD9240/94

HD9240/95

HD9240/96

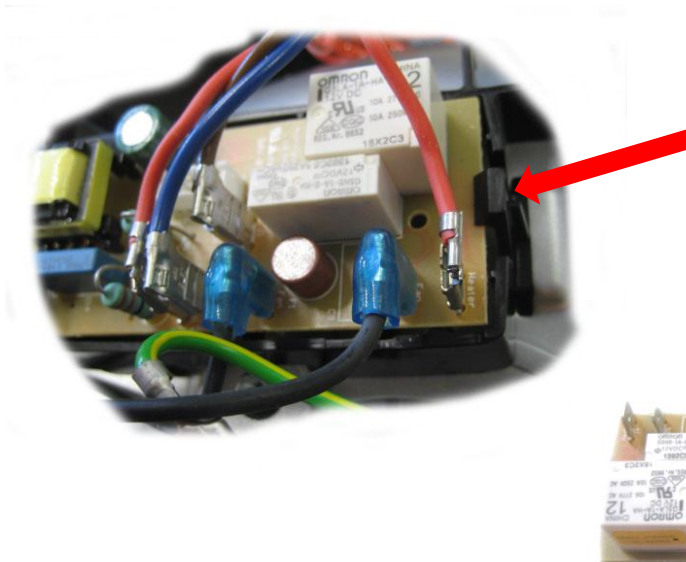
## D. Heating element removal

1. remove the crimps from the PCB part



## E. PCB removal

1. open the hook and remove all crimps



# DISSASSEMBLY ADVICE

HD9240/90  
HD9240/91  
HD9240/92  
HD9240/93  
HD9240/94  
HD9240/95  
HD9240/96

## F. Motor/ventilator removal

1. turn the screw into the right side, hold the ventilator



2. turn the screw into the right side



# DISSASSEMBLY ADVICE

HD9240/90

HD9240/91

HD9240/92

HD9240/93

HD9240/94

HD9240/95

HD9240/96

## G. Basket holder removal

1. open the 2 screws  
remove the basket holder



## H. Bottom/Heating shield removal

1. open all 4 screws

